



NEW PRODUCT

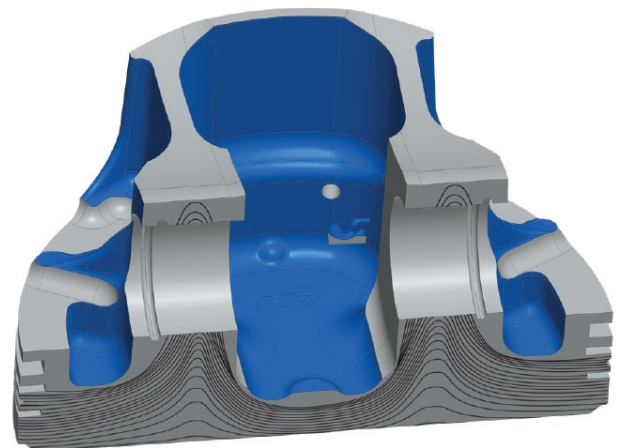
## Introducing the Industry's Strongest UTV Pistons

JE Pistons' Ultra Series Pistons Line for UTV Engines



*The industry-leading strength and manufacturing technology of JE's Ultra Series pistons has been expanded to performance UTV applications. Proprietary Aligned Grain Flow Technology combined with several other strength and power enhancing features make these JE's strongest UTV pistons yet, all with ready-to-order availability.*

- Available for popular **Honda, Kawasaki, and Polaris** applications in turbo and N/A compression ratios
- **Aligned Grain Flow Technology** - In-house forging has allowed JE to develop proprietary forging technology that directs the grain flow of the aluminum to flow around critical areas of the piston, increasing strength
- **Lateral Gas Ports** - Channeling combustion gases to the back of the top ring groove adds pressure behind the top compression ring for improved, consistent ring seal, critical in boosted applications
- **Ultra-Thick Ring Lands** - Aid in maintaining ring stability in forced induction and high-horsepower N/A engines for consistent power
- **Thermal Barrier Crown Coating** - Ceramic coating on the piston crown greatly reduces heat transfer into the piston material, decreasing fatigue and improving longevity
- **Tuff Skirt** - Proprietary, Moly-based dry film skirt coating is applied in-house and reduces operating friction for better wear resistance and improved performance
- **Accumulator Groove** - Provides additional volume to trap unwanted gases below the top ring to keep pressure low and ring seal and performance high
- **Double Pin Oilers** - Two oil channels fed into the pin bore maintain proper lubrication to improve wrist pin and pin bore wear resistance
- **Complete Kit** - Supplied with all necessary pistons, rings, wrist pins, and wire locks under one part number
- **Upgraded 9310 Wrist Pins** - Stronger, thicker wrist pin material designed to withstand additional loads of forced induction applications



**ALIGNED GRAIN FLOW TECHNOLOGY**

<b>JE Ultra Series Powersports UTV Piston Applications</b>				
<b>Honda</b>				
<b>2020 – 2022 Pioneer 1000 / 2019 – 2022 Talon 1000R / 1000X</b>				
<b>Part Number</b>	<b>Displacement</b>	<b>Bore</b>	<b>Compression Ratio</b>	<b>Retail (Kit)</b>
379446	999cc	92mm	9.0:1	\$685.36
379447	999cc	92mm	11.0:1	\$685.36
<b>Kawasaki</b>				
<b>2020 - 2022 Teryx KRX 1000</b>				
379448	999cc	92mm	9.5:1	\$685.36
379449	999cc	92mm	11.5:1	\$685.36
<b>Polaris</b>				
<b>2011 – 2014 RZR XP 900</b>				
379450	900cc	93mm	9.0:1	\$685.36
379451	900cc	93mm	10.5:1	\$685.36
<b>2014 – 2022 RZR XP 1000 / 2016 – 2022 General 1000 / 2018 – 2022 RS1</b>				
379454	999cc	93mm	9.5:1	\$685.36
379455	999cc	93mm	10.5:1	\$685.36
<b>2016 – 2022 RZR XP Turbo</b>				
379457	925cc	93mm	9.0:1	\$685.36
379458	925cc	93mm	9.5:1	\$685.36